





UPMC | University of Pittsburgh  
Medical Center

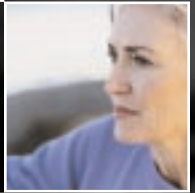
*Digestive Disorders Center*

200 Lothrop St.  
Pittsburgh, PA 15213-2582  
412-647-8666  
toll-free, 1-866-4GASTRO (442-7876)

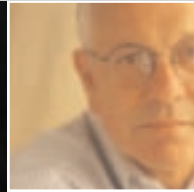
<http://gi.medicine.pitt.edu>

*To find a UPMC doctor, call 412-647-UPMC (8762) or 800-533-UPMC.  
For more information, physicians may call 800-544-2500.*

*The University of Pittsburgh Medical Center is an equal opportunity employer. Policy prohibits discrimination or harassment on the basis of race, color, religion, national origin, ancestry, sex, age, marital status, familial status, sexual orientation, disability, or veteran status. Further, UPMC will continue to support and promote equal employment opportunity, human dignity, and racial, ethnic, and cultural diversity. This policy applies to admissions, employment, and access to and treatment in UPMC programs and activities. This commitment is made by UPMC in accordance with federal, state, and/or local laws and regulations.*



**Digestive  
Disorders  
Centers**



## UPMC Digestive Disorders Centers

“provides streamlined access to world-renowned specialists in diseases of the digestive tract, liver, gallbladder, bile ducts, and pancreas, as well as problems of nutrition and obesity.

## Most Digestive Disorders Centers

services and procedures occur at

UPMC Presbyterian or at other

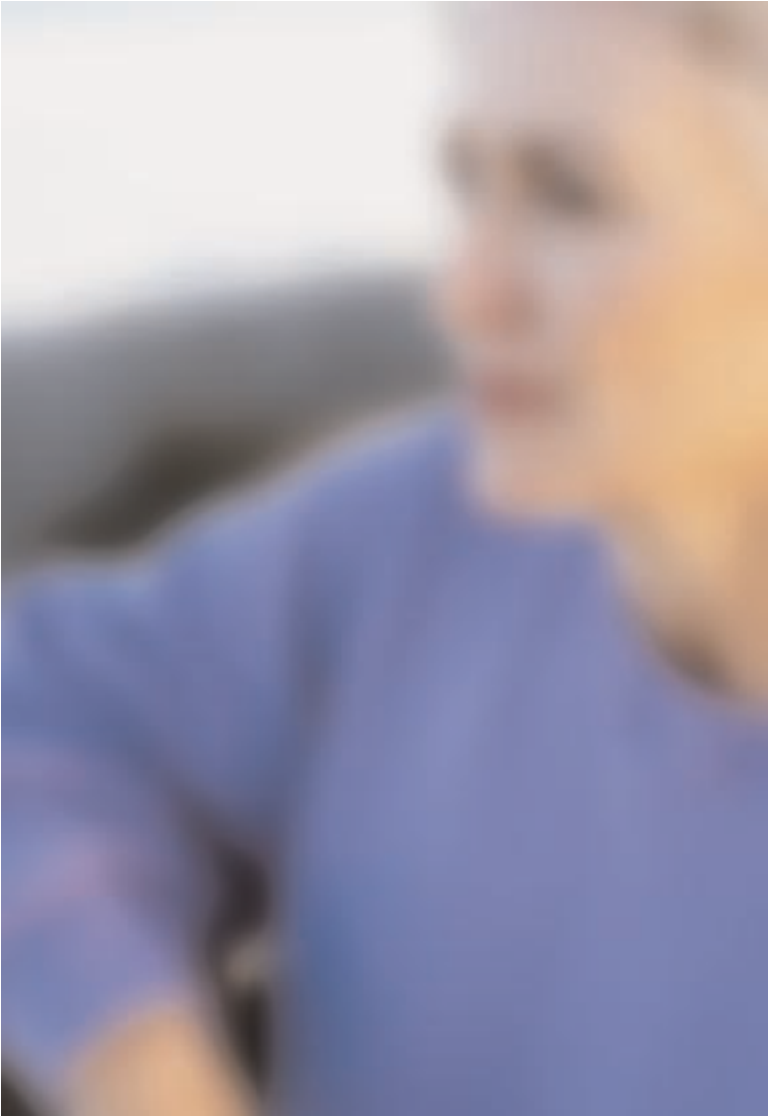
regional UPMC facilities.

## Digestive Health and Disease

More than 70 million people are affected by digestive diseases — nearly one third of the entire U.S. population. For some people, digestive disorders are a source of irritation and discomfort and may cause them to miss work frequently. For others, these disorders may be extremely serious and debilitating.



As with any health concern, identifying the cause early on helps to treat it correctly, without delay and with the greatest possible effectiveness. Proper diagnosis and treatment may require expert consultants whose familiarity with the latest digestive system research helps them select which tests and treatments should be used. More complex cases often require the coordinated effort of multiple specialists who use the most advanced diagnostic approaches to identify the problem and have the knowledge and skill to provide the best medical or surgical solution. All of these experts work together within the UPMC digestive health centers of excellence.



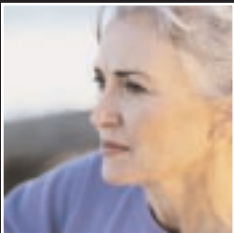
Rated among *U.S. News & World Report's* "Best of the Best" centers for diseases of the digestive tract — placing the program in the top 10 in the nation — the Digestive Disorders Centers provides advanced care to patients throughout the Pittsburgh region and beyond.

**The digestive system includes the:**

- esophagus
- stomach
- intestines
- gallbladder
- liver
- pancreas

Because of the complexity of the digestive system, many types of problems can occur, including:

- infections
- inflammation
- drug reactions
- nervous problems
- defective circulation
- bleeding
- inherited disorders
- poor nutrient absorption
- metabolism problems
- scarring
- cancer



In order to help you with your digestive health needs, UPMC's digestive health experts have developed a system that includes the following strengths:

- opportunities to be treated with advanced medicines not available elsewhere
- the most innovative medical equipment to help make the right diagnosis
- centralized telephone numbers 412-647-8666 or, toll-free, 1-866-4GASTRO (442-7876) with friendly, helpful, and well-trained staff to quickly link you with the right physician
- a World Wide Web site, <http://gi.medicine.pitt.edu>, filled with the information you need



- educational programs and support groups for the most serious diseases
- clinical investigations that transform laboratory advances into new choices for patients who have not been helped by standard treatments
- multiple locations where you can be seen and treated
- rapid communication of results and recommendations to your primary care physician so that all medical considerations are quickly addressed in your total health care plan



## **Expert GI consultation & second opinion clinics**

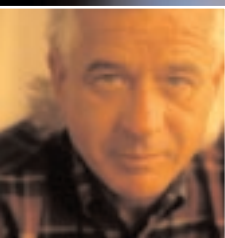
Digestive Disorders Centers physicians are faculty members of the University of Pittsburgh School of Medicine. They conduct Expert GI Consultation and Second Opinion Clinics in offices throughout the greater Pittsburgh area. These clinics are appropriate for:

- **patients with new or complex problems**
- **preventative gastrointestinal evaluations such as screening colonoscopy for cancer detection and follow-up of polyps**
- **evaluation of gastrointestinal reflux disease (GERD), disorders of continence, constipation, and other GI problems**

These specialist physicians are also knowledgeable about new treatments or evaluations available throughout the Digestive Disorders Centers, and can refer patients directly to special treatments when needed.

# Centers of excellence

When a person has a severe or complicated digestive disease, a knowledgeable team of health care experts may be needed. In these cases, direct referral to one of UPMC's digestive health centers of excellence is possible:



## **Pancreas and Biliary Center**

The Pancreas and Biliary Center is located within UPMC Presbyterian, in the Oakland area of Pittsburgh. This center is world-renowned for discovering the gene for hereditary pancreatitis, and the research team has made solid progress in its search for a gene for pancreatic cancer. The center specializes in idiopathic and familial pancreatitis, and early detection and treatment of pancreatic cancer. The Pancreas and Biliary Center also provides support for patients' nutritional and emotional needs and promotes interaction among support groups in Pittsburgh and other locations nationwide.

## **Inflammatory Bowel Disease Center**

The UPMC Inflammatory Bowel Disease (IBD) Center is located within UPMC Presbyterian and also operates out of Magee-Womens Hospital of UPMC, both in the Oakland area of Pittsburgh.

The center treats people with:

- **ulcerative colitis**
- **Crohn's disease**

The UPMC IBD Center also helps patients manage complications of Crohn's disease and ulcerative colitis such as skin and eye disorders, osteoporosis, biliary manifestations, and growth factors as well as other GI conditions such as celiac disease.

While there is still no cure for IBD, there are exciting new patient treatment options. The IBD Center offers the latest immunologic therapies that may have greater success and fewer troubling side effects than traditional steroid therapy. Patients benefit from the research advancements made by the IBD Center physicians, who are some of the world's leading IBD genetics and immunology researchers.



## **Neurogastroenterology and Motility Center**

The Neurogastroenterology and Motility Program is co-located within UPMC Presbyterian and Magee-Womens Hospital, both in the Oakland area of Pittsburgh. This center is best known for its groundbreaking work on constipation and abdominal pain. The center focuses on problems of intestinal function in both men and women, including:

- irritable bowel syndrome
- chronic abdominal pain
- visceral hyperalgesia
- gastroparesis
- pelvic floor dysfunction
- dyspepsia
- nausea
- fecal incontinence
- chronic constipation
- diarrhea
- swallowing disorders
- noncardiac chest pain
- heartburn
- painful swallowing
- backflow of stomach contents
- spasms in the esophagus
- chronic hoarseness or coughing



## **Swallowing Disorders Center**

Swallowing disorders are a priority for the UPMC Digestive Disorders Center. Physician specialists diagnose and treat disorders such as noncardiac pain, heartburn, painful swallowing, backflow of stomach contents, motor disorders such as esophageal spasm, and chronic hoarseness or coughing.

Evaluation and treatment are coordinated between the Swallowing Disorders Center ([www.upmc.edu/swallowingdisorders/default.htm](http://www.upmc.edu/swallowingdisorders/default.htm)) and the Digestive Disorders Center Neurogastroenterology and Motility Center.



## **Center for Intestinal Health and Nutrition Support**

The Center for Intestinal Health and Nutrition Support targets patients who are malnourished or at risk for malnutrition as a result of chronic medical illnesses or following surgery. Center nutrition specialists consult with a variety of patients, including those with:

- **major bowel resections**
- **intestinal transplants**
- **ulcerative colitis**
- **Crohn's disease**
- **celiac disease**
- **prior radiation or chemotherapy**
- **liver or pancreatic diseases**

Center nutrition specialists serve the needs of people receiving specialized nutrition by tube feeding or intravenous feeding with an emphasis on intestinal "rehabilitation," optimizing the function of the gastrointestinal tract by providing specialized nutrients, nutritional support, training, and education.



### **The Center for Liver Diseases**

The Center for Liver Diseases is located on the third floor of Falk Medical Building in the Oakland area of Pittsburgh. The Center for Liver Diseases focuses on all types of liver diseases, including:

- hepatitis A
- hepatitis B
- hepatitis C and other types of hepatitis
- hemochromatosis
- Wilson's disease and other genetic liver diseases
- liver disorders related to diabetes and obesity
- liver toxicity
- liver cirrhosis
- liver failure
- portal hypertension
- liver cancer

The majority of physicians of the Center for Liver Diseases are also trained as transplant hepatologists and partner with the world-famous Thomas E. Starzl Transplantation Institute.



## **Gastrointestinal Cancer Prevention, Early Diagnosis, and Treatment Programs**

The Gastrointestinal Cancer Prevention, Early Diagnosis, and Treatment Programs concentrate on cancer prevention and optimize the early diagnosis and treatment of cancers of the gastrointestinal tract. Physicians in this program coordinate cancer care with medical, surgical, and radiation oncologists at UPMC Cancer Centers ([www.upmccancer-centers.com](http://www.upmccancer-centers.com)), making use of UPMC cancer facilities such as the new Hillman Cancer Center in the Shadyside area of Pittsburgh.

The Gastrointestinal Cancer Prevention, Early Diagnosis, and Treatment Programs focus on cancers of the:

- **esophagus**
- **stomach**
- **liver**
- **pancreas**
- **colon**
- **rectum**



## Special Services and Procedures

UPMC Digestive Disorders Centers clinicians are experienced with the newest medical and surgical therapies for peptic ulcer and gastrointestinal reflux disease. The program also offers the services of an enterostomal nurse for patients with ileostomies and colostomies.

A full range of diagnostic tests is available to evaluate patients with a variety of digestive diseases. These include nutritional tests, breath tests, special motility tests, and tests of acid secretion.

Special diagnostic equipment procedures include:

- therapeutic endoscopic retrograde cholangiopancreatography (ERCP)
- magnetic resonance cholangiopancreatography (MRCP)
- spiral CT scanning
- GI radiology (upper GI, enteroclysis, barium enema)
- endoscopic ultrasound (EUS) with biopsy capability
- anal ultrasound
- upper GI endoscopy
- colonoscopy
- flexible sigmoidoscopy
- ileoscopy
- enteroscopy
- capsule endoscopy
- dilations and stent placements
- endoscopic laser therapy
- photodynamic therapy
- genetic testing
- pancreatic function test
- GI motility testing (esophagus, stomach, small intestine, colon, anorectal, sphincter of Oddi)
- esophageal 24-hour pH monitoring
- variceal banding and sclerotherapy
- endoscopic tumor removal or bypass
- diagnostic laparoscopy
- liver biopsy
- biofeedback



## **For more information**

For more information or to schedule an appointment at UPMC Digestive Disorders Centers, call 412-647-8666 or toll-free 1-866-4GASTRO (442-7876). Routine office hours are Monday through Friday, 8 a.m. to 5 p.m.

For information on any of UPMC Health System's services or for help with referral to a UPMC physician, call 412-647-UPMC (8762) or 1-800-533-UPMC. You can also get more information at [www.upmc.com](http://www.upmc.com).

Most Digestive Disorders Centers office visits and procedures occur in the Oakland section of Pittsburgh at UPMC Presbyterian or at Magee-Womens Hospital. Additional appointments may be made at Digestive Disorders Centers sites throughout the greater Pittsburgh region.

UPMC Health Plan, Medicare, Medicaid, and most major insurance companies cover most procedures at the Digestive Disorders Centers. Individuals should consult with their insurance company regarding their coverage for specific treatments. Please have your insurance information available when making an appointment.

For more information about UPMC Digestive Disorders Centers, see the inserts at the end of this brochure or call 412-647-8666 or, toll-free, 1-866-4GASTRO (442-7876).

**To request specific tests or information on clinical trials, have your primary care physician call 800-544-2500.**